



**PRICE LIST**  
LabelMax Series

2024



**LABELMAX SP3**  
Signs simply made by yourself  
- the ideal all-rounder.

**LABELMAX VS1**  
Accompany you on every path  
- the mobile system in a suitcase.

**LABELMAX ONE**  
The stand-alone system  
- without PC & Software.

**TAGREC STATION**  
The mobile workplace  
- incl. LabelMax SP3.



**FOUR MODELS - ONE BASE  
THE LABELMAX SERIES**

**LabelMax**

**CONTENT**

**■ LABELMAX SERIES**

Sign Printer, Software & Accessories

LabelMax SP3.....	4
LabelMax One .....	10
LabelMax VS1.....	12
TagRec Station.....	18
SignMax v10 .....	48
C- & R-Holder, LabelMax Media Case .....	25

Endless Materials

Ribbons & Film Cartridges.....	26
Special-Ribbons & Film Cartridges .....	28

Labels & Signs

Rectangle, Hexagon, Square, Circle.....	34
Safety Signs (Pipe Marker, Loto, etc.).....	39



# SIGNS SIMPLY MADE BY YOURSELF.

THE PERFECT SIGN FOR EVERY AREA!



**LabelMax SP3**

# LabelMax SP3



**COMPLETE SET**  
**€ 1,790**

Item No. 106678 plus VAT

## Durable Signage and Labeling as Efficient as Never Before!

The LabelMax SP3 is very user-friendly. It is a reliable sign and label printer to print a wide range of very durable labels and signs, providing high quality printing. Changing consumables is even more comfortable now: Just plug in the film cartridge, align the tape and you are ready to print. The label and design software SignMax makes the creation of signs and labels easy and versatile like never before. Choose symbols, templates and useful clip arts from a huge Clip Art Library for fast and professional results. Create and produce pipe markers, safety signs, inspection plates as well as individual text within seconds. In addition you can import your company-logo or generate barcodes and many more.



ALLROUNDER



SOFTWARE



SIGNS & LABELS



RESISTANT



Item No.	Product	Description	Price/Pc.
106678	LabelMax SP3 - Complete Set	All-rounder labeling system incl. software	€ 1,790
106690	SignMax v10 - Basic	Software for LabelMax SP3, VS1 & TagRec Station	€ 649
106944	SignMax v10 - Basic Pro	Software for LabelMax SP3, VS1 & TagRec Station (Premiumversion)	€ 899
801182	Maintenance contract LabelMax Series*	1x a year / term 3 years	On request
801202	User training LabelMax SP2, SP3, One*		€ 319

\*Maintenance contracts & user training on request. Not available in every country.

# HIGHLIGHTS OVERVIEW

- Ideal all-rounder  
Whether in the office, industry, laboratory or workshop - the LabelMax SP3 creates the perfect sign for every area.
- Particularly durable print quality  
The labels are resistant to many solvents, alkalis, acids, seawater and external environmental influences.
- Simple sign software  
Simple sign design without prior knowledge with SignMax v10.

large selection of labels, ribbons and endless films

easy change of ribbons and film cartridges



SignMax v10  
easy sign software  
(Page 7)

	Specifications
Dimensions (WxLxH)	226 × 332 × 198 mm
Weight	3.75 kg
Interface	USB 2.0, Ethernet, USB-Host
System Requirements	Windows 10 or 11
Resolution	300 dpi
Print Size (WxL)	max. 100 × 1500 mm
Media Width	105 mm
Processing	Automatically Cutting (Guillotine Cutter)
Included Items	Printer Driver, Power Adapter, Power Cable, USB Cable, Manual

individual and extremely resistant signs and labels



## SIGNMAX V10 - BASIC

### The Easy Sign Software for LabelMax SP3

With the Basic version, you get all the functions you would expect from a professional sign software. Creating texts and various shapes is child's play and subsequent editing of the objects is possible at any time. In addition, you can choose from numerous templates and always receive up-to-date pictograms from us.



You can find more information about our SignMax v10 starting on page 48.



**SIMPLE SIGNDESIGN  
QUICKLY & WITHOUT PRIOR KNOWLEDGE**



## APPLICATION AREAS

The LabelMax SP3 is the perfect all-rounder for industry and trade, as well as office and retail environments. Convince yourself of the SP3 - we also like to come by and present you his skills directly on site.

### Perfect for:

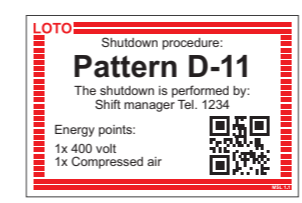
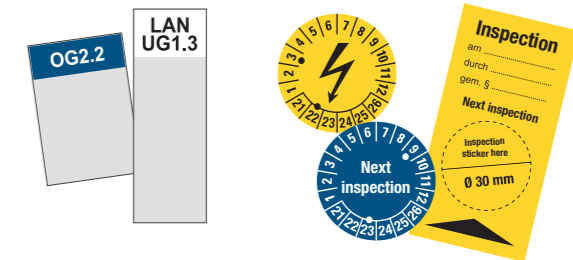
- Information and type plates
- Pipe markers
- Safety signs
- Cable & tube markers
- Inspection stickers
- LOTO labels
- Product signage
- and much more!



### Print Specification:

- Media width: max. 105 mm
- Print size: max. 100x1500 mm
- Thermal transfer printing system with up to eight ribbons mit nine special ribbons

## THE PERFECT SIGN - FOR EVERY AREA!



# LabelMax ONE



**COMPLETE SET**  
**€ 1,790**

Item No. 111673 plus VAT

## EASY LABELING - WITHOUT A PC!

### Easy Labeling Without a PC!

Our LabelMax One combines the usual solid ease of use from LabelMax SP3 with more flexibility and faster access to your signs and labels. As a stand-alone solution, all required data and templates are saved in the system and can be passed through with the included USB keyboard and the control panel on the LabelMax. You tell us what you need and we'll prepare your LabelMax One. Everything you need is a power source, no PC, no software!



NO PC



DISPLAY MENU



TEMPLATES



COMPLETE SET



Item No.	Product	Description	Price/Pc.
111673	LabelMax One - Complete Set	Stand-alone labeling system incl. keyboard	€ 1,790
801182	Maintenance contract LabelMax Series*	1x a year / term 3 years	On request
801202	User training LabelMax SP2, SP3, One*		€ 319

\*Maintenance contracts & user training on request. Not available in every country.

## HIGHLIGHTS OVERVIEW

- Stand-alone system  
No PC and no graphics programme necessary.
- Numerous templates  
Simply select a suitable template via the control panel on the LabelMax One and label it with individual texts.
- Complete set incl. keyboard  
You only need a power socket.

Specifications	
Dimensions (WxLxH)	226 × 332 × 198 mm
Weight	3.75 kg
Interface	USB 2.0, Ethernet, USB-Host
Resolution	300 dpi
Print size (WxL)	max. 100 × 1500 mm
Media width	105 mm
Processing	Automatically Cutting (Guillotine Cutter)
Included items	Print Driver, USB Cable, Adapter, Power Cable, USB Keyboard, Manual



**control panel**  
choose from numerous templates, adapted to your individual requirements

**stand-alone solution**  
without a PC

**incl. USB keyboard**  
for easy data entry

**high-quality prints for extremely long-lasting markings**

**LabelMax VS1**



**ACCOMPANIES YOU ON EVERY WAY.**

FULL RANGE OF FUNCTIONS ON THE GO - WITH OUR MOBILE LABELING SYSTEM.

# LabelMax VS1



**COMPLETE SET**  
**€ 4,120**  
 Item No. 110201 plus VAT

### Always Ready to Print!

The LabelMax VS1 is a mobile device. The case made of highly impact resistant HDPE plastic ensures high protection on transport routes and under extreme conditions. The LabelMax VS1 is naturally dust and splash-proof (IP 54). Heat, frost, water and strong physical impact can not affect this system. Regardless of power sources, this labeling system can be used anywhere and anytime. „Just print a sign“ wherever it is needed - it's that easy.



-   
MOBILE DEVICE
-   
OUTDOOR
-   
STURDY
-   
SOFTWARE
-   
COMPLETE SET

Item No.	Product	Description	Price/Pc.
110201	LabelMax VS1 - Complete Set	Mobile labeling system in a case incl. tablet & software	€ 4,120
106690	SignMax v10 - Basic	Software for LabelMax SP3, VS1 & TagRec Station	€ 649
106944	SignMax v10 - Basic Pro	Software for LabelMax SP3, VS1 & TagRec Station (Premiumversion)	€ 899
801182	Maintenance contract LabelMax Series*	1x a year / term 3 years	On request
801241	User training LabelMax VS1 *		€ 319

\*Maintenance contracts & user training on request. Not available in every country.

# HIGHLIGHTS OVERVIEW

- **Mobile labeling system**  
Extremely powerful battery operation.
- **Robust & for the most extreme conditions**  
For outdoor use, splash-proof (IP 54) and extremely robust (US military standard MIL-STD-810G).
- **Compatible with the LabelMax Series**  
You already have a LabelMax? The VS1 is compatible with the consumables of the LabelMax Series and can also be used for outdoor applications.
- **Complete set incl. tablet\*, ribbon & film**  
You can start labeling right away.

Specifications	
Dimensions (WxLxH)	600 × 500 × 280 mm
Weight	10.5 kg
Interface	WiFi
Resolution	300 dpi
Print Size (WxL)	max. 100 × 2000 mm
Media Width	105 mm
Processing	Automatically Cutting (Guillotine Cutter)
Included Items	AC Adapter, Power Cable, Ribbon Black (110 mm × 50 m), Foil Cartridge Max Premium White (100 mm × 10 m), Optional incl. Tablet & Keyboard



**solid case**  
protects against dust, splash water and shocks

**storage compartment**  
practical storage for connection and charging cables

**cartridge holder**  
additionally protects and secures the cartridges during transport

**SignMax v10**  
Easy sign software (Page 15)

**displaypanel**  
battery indicator, USB charging socket, DC charging socket for battery, On-/Off- Switch

**up to 20 hours of battery life**

**non-slip surface**  
safe storage for laptop or tablet

## SIGNMAX V10 - BASIC

### The Easy Sign Software for LabelMax VS1

With the Basic version, you get all the functions you would expect from a professional sign software. Creating texts and various shapes is child's play and subsequent editing of the objects is possible at any time. In addition, you can choose from numerous templates and always receive up-to-date pictograms from us.

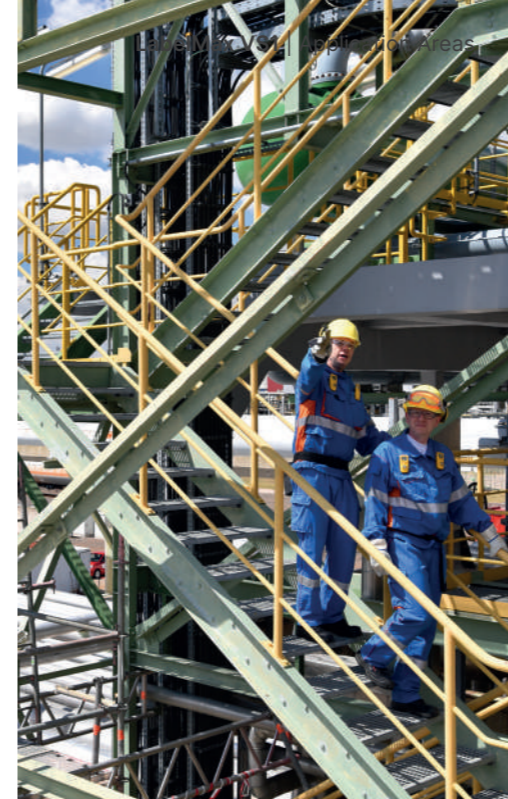


You can find more information about our SignMax v10 starting on page 48.



**SIMPLE SIGNDESIGN  
QUICKLY & WITHOUT PRIOR KNOWLEDGE**





## APPLICATION AREAS

The LabelMax VS1 is perfectly suited for any outdoor application without any power supply - whether industrial or trade, as well as logistics, plant and construction site markings... The VS1 convinces with its full performance spectrum. Convince yourself - we are also happy to come by and present you his skills directly on site.

### Perfect for:

- Logistics outdoor
- Plant and machine markings
- Construction site marking
- Safety markings
- Pipe markers
- Test & measurement technology for identification and marking
- and much more!



### Print Specification:

- Media width: max. 105 mm
- Print size: max. 100x1500 mm
- Thermal transfer printing system with up to eight ribbons mit nine special ribbons
- Extremely robust, mobile system for outdoor use

## FULL RANGE OF FUNCTIONS - ON THE GO!



# TAGREC STATION



# MOBILE WORKPLACE

EFFICIENT WORK WITHOUT UNNECESSARY WAYS!

# TagRec Station



COMPLETE SET

€ 5,490

Best. Nr. 111299

plus VAT

## The Location-Independent Workstation!

The TagRec Station is a mobile workstation that takes the labeling system and the PC wherever they are needed. It reduces the travel time between the workstation and the marking location and increases productivity!

The LabelMax SP3 is a labeling system for comprehensive labeling solutions. It also comes with the easy-to-use SignMax sign software with all common pictograms and sign templates.

Our proven battery system ensures that the TagRec Station is powered for a complete working day\*. The trolley's robust design is adapted to a harsh environment and the industrial-grade castors make it easy to move.



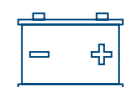
MOBILE DEVICE



COMPLETE SET



SOFTWARE



AKKU BATTERY



STURDY

Item No.	Product	Description	Price/Pc.
111299	TagRec Station - Complete Set	Mobile workstation incl. labeling system, PC & software	€ 5,490
111298	TagRec Station	Mobile workstation	€ 3,900
106690	SignMax v10 - Basic	Software for LabelMax SP3, VS1 & TagRec Station	€ 649
106944	SignMax v10 - Basic Pro	Software for LabelMax SP3, VS1 & TagRec Station (Premiumversion)	€ 899
801182	Maintenance contract LabelMax Series**	1x a year / term 3 years	On request
801247	User training TagRec Station **		€ 445

\*Depending on the actual utilization.

\*\*Maintenance contracts & user training on request. Not available in every country.

# HIGHLIGHTS OVERVIEW

- **Mobile workplace**  
Efficient working without unnecessary ways.
- **Complete set incl. labeling system, software & power supply**  
The LabelMax SP3 and the SignMax Basic are the perfect team for labelling solutions.
- **Charge once and go a whole day without power connection!**  
Our proven battery system ensures that the TagRec Station is powered for a complete working day.\*
- **Industrial castors & sturdy construction**  
Perfect for moving on rough surfaces.
- **Flexible modular system**  
If you have special requirements for your mobile workstation, we can also configure a completely customised model.

	Specifications
Dimensions (WxLxH)	610 × 457 × 1520 mm
Interface	USB 2.0, Ethernet, USB-Host
System Requirements	Windows 10 or 11
Resolution	300 dpi
Print Size (WxL)	max. 100 × 1500 mm
Media Width	105 mm
Processing	Automatically Cutting (Guillotine Cutter)
Included Items	Rack incl. Wheels, Labeling System LabelMax SP3, PC with Windows 10 Pro, Software SignMax Basic, Power Supply with Reinforced Battery Pack, Monitor, Monitor Bracket, Keyboard, Computer Mouse, Mousepad, Manual



SignMax v10  
easy sign software  
(Page 21)

incl. monitor, PC,  
mouse & keyboard

LabelMax SP3  
labeling system  
for high quality  
labeling solutions

robust  
construction

protected storage  
compartment  
convenient storage for technology  
and consumables

Battery operation  
for a whole  
working day\*

wheels  
suitable for industrial use  
and lockable



## SIGNMAX V10 - BASIC

### The Easy Sign Software for TagRec Station

With the Basic version, you get all the functions you would expect from a professional sign software. Creating texts and various shapes is child's play and subsequent editing of the objects is possible at any time. In addition, you can choose from numerous templates and always receive up-to-date pictograms from us.



You can find more information about our SignMax v10 starting on page 48.



**SIMPLE SIGNDISIGN  
QUICKLY & WITHOUT PRIOR KNOWLEDGE**



## APPLICATION AREAS

The TagRec Station is the perfect workplace for industry and trade, as well as warehouses and workshops. Convince yourself of the mobile workstation incl. LabelMax SP3 labeling system - we are also happy to come by and present you his skills directly on site.

### Perfect for:

- Standing activities: space-saving, mobile workplace
- Shelf & warehouse labels
- Information and type plates
- QR & barcode labels
- Safety signs
- Inspection stickers
- Pipe markers
- Cable & tube markers
- LOTO labels
- and much more!



### Print Specification:

- Media width: max. 105 mm
- Print size: max. 100x1500 mm
- Thermal transfer printing system with up to eight ribbons mit nine special ribbons
- Mobile workstation incl. labeling system, PC, monitor, mouse and keyboard

## EFFICIENT WORK - WITHOUT UNNECESSARY WAYS!



# SAVE COSTS WITH OUR MAINTENANCE SERVICE!\*



## MAINTENANCE CONTRACTS\*

Experience has shown that most failures and malfunctions are due to contamination. Preventive professional cleaning and regular maintenance increase the service life and functionality of your labeling system!

### Advantages at a glance:

- Decreasing and predictable costs
- Fewer failures due to a regularly checked system
- Early detection of defects or technical wear

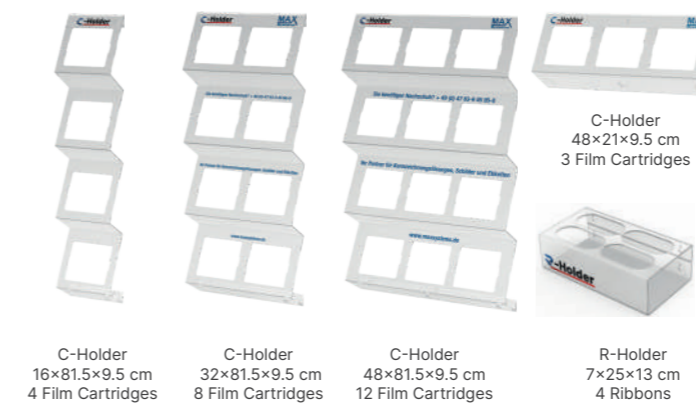
## ACCESSORIES

### C-Holder & R-Holder

Film cartridges and ribbon shelf

Always clearly and securely stored. With our shelving systems you are perfectly equipped. On request, the shelf systems can be completely personalized with your individual logo!

Available Variants:



Item No.	Description	Suitable for	Row / Size in cm	Price/Pc.
111997	C-Holder film cartridges shelf	4x film cartridges	1-row/ 16x81.5x9.5	€ 136
111998	C-Holder film cartridges shelf	8x film cartridges	2-row/ 32x81.5x9.5	€ 152
111999	C-Holder film cartridges shelf	12x film cartridges	3-row/ 48x81.5x9.5	€ 176
112000	C-Holder film cartridges shelf	3x film cartridges	horizontal / 48x21x9.5	€ 72
112001	R-Holder ribbons shelf	4x ribbons	2-row/ 7x25x13	€ 66

## MORE ORDER. BETTER OVERVIEW. WORK MORE EFFICIENTLY.

### LabelMax Media Case

Case for consumables

The media case offers storage space for four film cartridges, four ribbons and lots of accessories.



Item No.	Product	Description	Price/Pc.
112002	LabelMax Media Case	Case for consumables	€ 264



Topseller!

## RIBBONS



### For Max Premium & Max Premium Plus Films

High quality ribbons for durable signs and markings. High print quality, sea water resistance, resistance to many solvents (such as turpentine or gasoline), various alkalis and acids. In conjunction with our high performance, films can produce up to 125 meters signage/labeling.

Colour	Width in mm	Length in m	LabelMax SP3, One & TagRec Station		LabelMax VS1	
			Item No.	Price/Pc.	Item No.	Price/Pc.
black	110	125	106671	€ 74	110250	€ 74
white	110	125	106672	€ 74	110251	€ 74
safety green	110	125	106673	€ 74	110252	€ 74
safety red	110	125	106674	€ 74	110253	€ 74
signalred* *LOTO marking	110	125	110569	€ 74	110570	€ 74
safety blue	110	125	106675	€ 74	110254	€ 74
blue	110	125	111255	€ 74	111257	€ 74
orange	110	125	106676	€ 74	110255	€ 74

## FILM CARTRIDGES

### Max Premium & Max Premium Plus Films

The vinyl films are cadmium-free and feature excellent resistance to UV light, chemicals and moisture. They are perfect for indoor and outdoor use. The film cassettes are protected by a sleeve so that you always have optimum protection of the material when changing the film.

#### Max Premium

A highly adhesive vinyl film for extremely long-lasting markings. Max Premium is the perfect film for, for example, plant and machine labeling.

#### Max Premium Plus

Very strong adhesive vinyl film that adheres excellently to low energy surfaces and also has very good adhesion to lightly soiled surfaces. Ideally suited for permanent markings in harsh environments.



Topseller!

Colour	Image	MAX Premium				MAX Premium Plus			
		30mm×30m	50mm×30m	75mm×30m	100mm×30m	30mm×30m	50mm×30m	75mm×30m	100mm×30m
white	M10	106743	107070	107030	107044	110246	110245	110244	110204
yellow	M13	106748	106856	107031	107045	110217	110224	110231	110238
black	M21	106756	106868	107032	107046	110216	110223	110230	110237
sky blue	M22	106759	106880	107033	107047	-	-	-	-
safety green	M24	106764	107020	107034	107048	110220	110227	110234	110241
orange	M30	106777	107022	107036	107050	110221	110228	110235	110242
safety red	M32	106779	107023	107037	107051	110219	110226	110233	110240
silver	M34	106788	107024	107038	107053	110218	110225	110232	110239
violet	M38	106794	107025	107039	107054	110247	110266	110269	110272
traffic grey	M43	106796	107026	107040	107055	110248	110267	110270	110273
safety blue	M44	106799	107027	107041	107056	110222	110229	110236	110243
transparent	M50	106805	107028	107042	107057	-	-	-	-
signal brown	M78	106809	107029	107043	107058	110249	110268	110271	110274
Price/Pc.		€ 82	€ 93	€ 119	€ 139	€ 98	€ 110	€ 142	€ 166

# SPECIAL-FILM EDGE



## Film Cartridges EDGE

The EDGE film has a small edge on the right and left. This enables the signs to be quickly removed and borderless printing, so that largeformat labels can also be printed by the LabelMax.

Colour	Cartridge	MAX Premium				MAX Premium Plus			
		30mm×30m	50mm×30m	75mm×30m	100mm×30m	30mm×30m	50mm×30m	75mm×30m	100mm×30m
white	M10	111882	111895	111908	111921	111934	111945	111956	111967
yellow	M13	111883	111896	111909	111922	111935	111946	111957	111968
black	M21	111884	111897	111910	111923	111936	111947	111958	111969
sky blue	M22	111885	111898	111911	111924	-	-	-	-
safety green	M24	111886	111899	111912	111925	111937	111948	111959	111970
orange	M30	111887	111900	111913	111926	111938	111949	111960	111971
safety red	M32	111888	111901	111914	111927	111939	111950	111961	111972
silver	M34	111889	111902	111915	111928	111940	111951	111962	111973
violet	M38	111890	111903	111916	111929	111941	111952	111963	111974
traffic grey	M43	111891	111904	111917	111930	111942	111953	111964	111975
safety blue	M44	111892	111905	111918	111931	111943	111954	111965	111976
transparent	M50	111893	111906	111919	111932	-	-	-	-
signal brown	M78	111894	111907	111920	111933	111944	111955	111966	111977
Price/Pc.		€ 99	€ 111	€ 144	€ 159	€ 111	€ 125	€ 159	€ 185

**EASY TO USE. BORDERLESS PRINTING.  
LARGE FORMAT.**

# SPECIAL-FILMS LUMINESCENT & REFLECTIVE

## Luminescent Foil

The luminescent foil complies with DIN 67510. Ideal for companies, public institutions, as well as fairs and indoor and outdoor use.

Specifications: luminescent, glossy

Ribbon: Max Premium ribbon



Width	Length	Item No.	Price/Pc.
50mm	16.5m	106923	€ 149
100mm	16.5m	106924	€ 259

## Reflective Foil

Our highly reflective sheeting improves the visibility of warning lights in the dark when they are illuminated by light (e.g. from car headlights).

Our tip: Every „white space“ on your sign, will be extremely reflective!

Specifications: reflective, glossy

Ribbon: Max Premium ribbon



Colour	Code	Width	Length	Item No.	Price/Pc.
white	010	100mm	16.5m	106947	€ 199
yellow	020	100mm	16.5m	106949	€ 199
red	030	100mm	16.5m	106951	€ 199
orange	035	100mm	16.5m	106953	€ 199
blue	050	100mm	16.5m	106955	€ 199
green	060	100mm	16.5m	106957	€ 199

**PERFECT VISIBILITY  
- EVEN IN THE DARK!**

# SPECIAL-FILMS FOR PERMANENT APPLICATIONS



## Document Film

The document film can't be transferred undamaged. It frays into small pieces if someone tries to peel it off. Labels made of this material cannot be removed intact.

Specifications: white, matte

Ribbon: Polyester ribbon

Width	Length	Item No.	Price/Pc.
30mm	25m	111713	€ 99
50mm	25m	111714	€ 112
75mm	25m	111715	€ 144
100mm	25m	111716	€ 169



## Aluminium Film

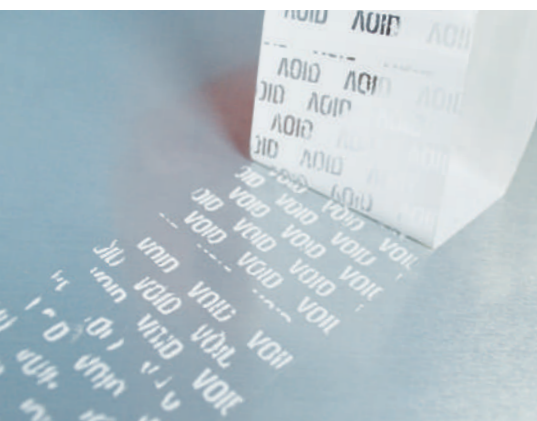
with polyester coating

Thanks to the very good adhesive, it also holds reliably on difficult and slightly oily surfaces. Temperature resistant up to 150 °C. Is detected by metal detectors.

Specifications: silver/platin, glossy

Ribbon: Polyester ribbon

Width	Length	Item No.	Price/Pc.
50mm	25m	106911	€ 125
75mm	25m	106912	€ 149
100mm	25m	106913	€ 189



## VOID Film

This film is equipped with a non-visible lettering „VOID“, which sticks to the substrate during detachment tests. Labels made of this material cannot be removed intact.

Specifications: white, glossy

Ribbon: Polyester ribbon

Width	Length	Item No.	Price/Pc.
50mm	25m	106917	€ 122
75mm	25m	106918	€ 149
100mm	25m	106919	€ 189

**EXCELLENT DURABILITY.  
HARD TO REMOVE.**

# SPECIAL-FILMS FOR SHORT TERM APPLICATIONS

## Removable Polyester Film

This film offers reliable adhesion and can easily be removed.

Properties: white, glossy

Ribbon: Polyester ribbon



Width	Length	Item No.	Price/Pc.
50mm	25m	106905	€ 107
75mm	25m	106906	€ 124
100mm	25m	106907	€ 169

## Magnetic Film

This film has a magnetic backing, for the easy and removeable marking on metallic surfaces. Ideal for companies, public institutions, as well as fairs and indoor and outdoor use.

Specifications: magnetic, glossy

Ribbon: Max Premium ribbon



Width	Length	White M10		Yellow M13	
		Item No.	Price/Pc.	Item No.	Price/Pc.
50mm	10m	110210	€ 99	110212	€ 99
100mm	10m	110209	€ 115	110211	€ 115

# SPECIAL-FILM PRINTABLE TEXTILE FILM

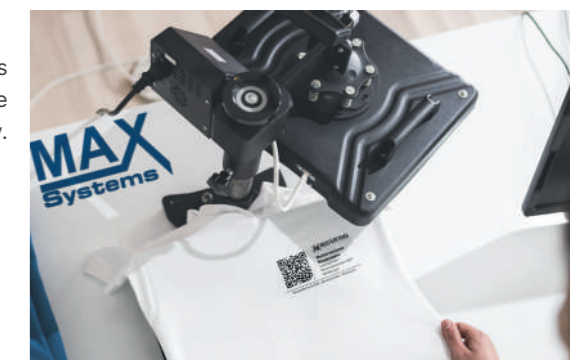
## LabeltexMax SP3 - Film for hot transfer

LabeltexMax is a universal film specially developed for use on various textiles. With this high-quality and durable film, any design can be easily and quickly printed on any type of textile. **Note:** TranstexMax, the necessary transfer film for textile films, is sold separately.

Specifications: Film for hot transfer, matte

Ribbon: Max Premium ribbon

- Developed for application on all types of textiles (cotton, polyester, acrylic, nylon)
- Application in low temperature mode (120°C only 20 seconds)
- Quick application mode: Only 5 seconds contact with heating plates.
- OEKO-TEX product class 1



### LabeltexMax SP3 - Labels

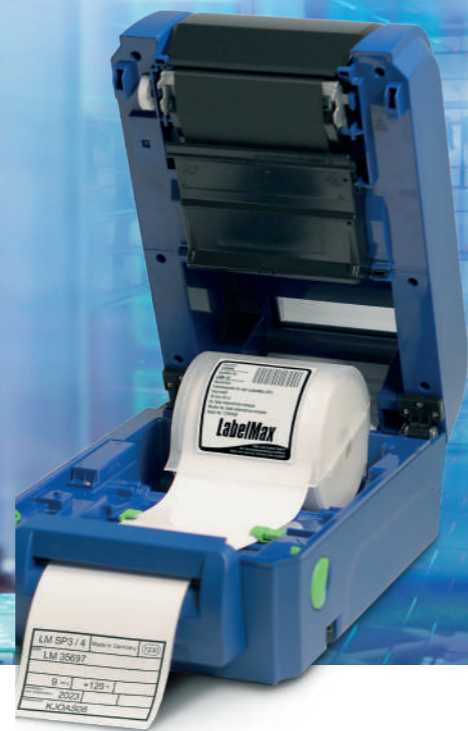
Shape	Size in mm	Pc./Roll	Item No.	Price/Roll
Square	30×30	550	113225	€ 119
Square	35×35	500	113507	€ 119
Square	70×70	250	113236	€ 169
Rectangle	30×15	2000	113234	€ 169
Rectangle	30×90	180	113226	€ 65
Rectangle	40×14,5	1000	113224	€ 125
Rectangle	40×25	700	113235	€ 125
Rectangle	45×100	190	113508	€ 189
Rectangle	50×100	300	113227	€ 189
Circle	100	175	113228	€ 189

### LabeltexMax SP3 - Endless Material

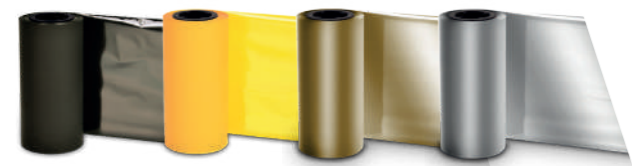
Width	Length	Item No.	Price/Roll
30mm	20m	113469	€ 129
50mm	20m	113470	€ 159
75mm	20m	113471	€ 189
100mm	20m	113472	€ 219

**NEW!**





## SPECIAL-RIBBONS POLYESTER



### Ribbons Polyester

for polyester films and films with polyester coating

High quality polyester ribbons for durable signs and markings. High print quality, sea water resistance, resistance too many solvents (e.g. turpentine or gasoline) and various alkalis and acids. Suitable for indoor and outdoor\* use.

\*We recommend gold & silver for indoor use only.

Colour	Width in mm	Length in m	LabelMax SP3, One & TagRecStation		LabelMax VS1	
			Item No.	Price/Pc.	Item No.	Price/Pc.
black	110	150	106904	€ 129	110256	€ 129
white	110	150	106927	€ 129	110257	€ 129
safety green	110	150	106928	€ 129	110258	€ 129
safety red	110	150	106929	€ 129	110259	€ 129
safety blue	110	150	106930	€ 129	110260	€ 129
yellow	110	150	106931	€ 129	110261	€ 129
orange	110	150	106932	€ 129	110262	€ 129
gold*	110	100	106933	€ 129	112953	€ 129
silver*	110	150	106934	€ 129	110264	€ 129

## SPECIAL-FILMS POLYESTER

### Film Cartridges Polyester

The polyester film is chloride, heavy metal and plasticizer free. It is characterized by good workmanship, high adhesion and excellent resistance to UV light, acids, alkalis and solvents. Suitable for indoor and outdoor use. For printing the polyester film, a polyester ribbon is required.



Colour		30mm×25m	50mm×25m	75mm×25m	100mm×25m
white	P10	106986	106983	106826	106752
yellow	P13	106755	106754	106827	106761
black	P21	106757	106812	106828	106857
safety green	P24	106763	106814	106830	106862
orange	P30	106768	106817	106840	106865
safety red	P32	106770	106818	106842	106867
silver	P34	106771	106820	106844	106869
violet	P38	106772	106821	106845	106870
traffic grey	P43	106773	106822	106846	106871
safety blue	P44	106774	106823	106847	106872
transparent	P50	106775	106824	106848	106873
signal brown	P20	106776	106989	106849	106875
Price/Pc.		€ 99	€ 137	€ 188	€ 199

# LABELS RECTANGLE



## Rectangle

Perfect for high quality safety markings, product signage and much more.

### 8-29 mm Width

Size in mm	SignMax Template	Pc./Row	Pc./Roll	Max Premium		Max Premium Plus	
				Item No.	Price/Roll	Item No.	Price/Roll
8×30	L8×30	2	2500	SP558	€ 135	SP559	€ 165
12×10	L12×10	3	1500	SP834	€ 69	SP835	€ 83
12×14	L12×14	2	1500	SP569	€ 96	SP833	€ 116
16×6	L16×6	3	2500	SP500	€ 94	SP600	€ 114
20×8	L20×8	2	2500	SP501	€ 109	SP759	€ 132
25×15	L25×15	3	2000	SP502	€ 124	SP760	€ 149
26.5×17.5	L26.5×17.5	2	1500	SP503	€ 123	SP761	€ 146

### 30-39 mm Width

Size in mm	SignMax Template	Pc./Row	Pc./Roll	Max Premium		Max Premium Plus	
				Item No.	Price/Roll	Item No.	Price/Roll
30×15	L30×15	2	1250	SP504	€ 109	SP762	€ 132
30×20	L30×20	2	1000	SP564	€ 106	SP831	€ 126
30×25	L30×25	1	750	SP549	€ 102	SP806	€ 123
30×110	L30×110	1	225	SP505	€ 105	SP763	€ 124
32×7	L32×7	2	2500	SP506	€ 126	SP764	€ 155
33×14	L33×14	2	1250	SP507	€ 105	SP765	€ 124
38×113	L38×113	2	450	SP508	€ 174	SP766	€ 209

### 40-49 mm Width

Size in mm	SignMax Template	Pc./Row	Pc./Roll	Max Premium		Max Premium Plus	
				Item No.	Price/Roll	Item No.	Price/Roll
40×20	L40×20	1	1000	SP547	€ 132	SP804	€ 158
40×25	L40×25	1	750	SP509	€ 117	SP767	€ 139
40×28	L40×28	1	750	SP552	€ 132	SP843	€ 157
43×17	L43×17	1	1000	SP510	€ 123	SP768	€ 149
43×20	L43×20	1	750	SP565	€ 124	SP832	€ 150
44×115	L44×115	1	200	SP511	€ 125	SP769	€ 158
45×15	L45×15	1	1000	SP512	€ 121	SP770	€ 146
45×20	L45×20	1	750	SP513	€ 111	SP771	€ 138
45×25	L45×25	2	1000	SP514	€ 125	SP772	€ 155

### 50-59 mm Width

Size in mm	SignMax Template	Pc./Row	Pc./Roll	Max Premium		Max Premium Plus	
				Item No.	Price/Roll	Item No.	Price/Roll
50×15	L50×15	1	1000	SP860	€ 129	SP861	€ 156
50×25	L50×25	1	750	SP515	€ 136	SP773	€ 163
50×30	L50×30	1	750	SP548	€ 144	SP805	€ 172
50×35	L50×35	1	500	SP517	€ 117	SP774	€ 139
50×300	L50×300	1	80	SP518	€ 132	SP775	€ 158
50.8×25.4	L50.8×25.4	1	400	SP836	€ 99	SP837	€ 119
52×28	L52×28	1	750	SP545	€ 145	SP802	€ 174
54×12	L54×12	1	1250	SP519	€ 125	SP776	€ 150
55×25	L55×25	1	750	SP520	€ 144	SP777	€ 175
55×135	L55×135	1	175	SP521	€ 139	SP778	€ 171
57×80	L57×80	1	400	SP522	€ 168	SP779	€ 199
58×35	L58×35	1	650	SP567	€ 145	SP568	€ 175
58×52	L58×52	1	450	SP561	€ 171	SP808	€ 205
59×74	L59×74	1	350	SP523	€ 146	SP780	€ 177

# LABELS RECTANGLE

### 60-69 mm Width

Size in mm	SignMax Template	Pc./Row	Pc./Roll	Max Premium		Max Premium Plus	
				Item No.	Price/Roll	Item No.	Price/Roll
60×8	L60×8	1	1250	SP524	€ 132	SP781	€ 159
60×20	L60×20	1	900	SP525	€ 149	SP782	€ 182
60×30	L60×30	1	750	SP526	€ 147	SP783	€ 179
60×45	L60×45	1	500	SP527	€ 152	SP784	€ 183
65×40	L65×40	1	500	SP554	€ 152	SP846	€ 183

### 70-79 mm Width

Size in mm	SignMax Template	Pc./Row	Pc./Roll	Max Premium		Max Premium Plus	
				Item No.	Price/Roll	Item No.	Price/Roll
70×30	L70×30	1	700	SP528	€ 163	SP785	€ 196
70×40	L70×40	1	450	SP861	€ 144	SP862	€ 171
70×113	L70×113	1	200	SP563	€ 144	SP830	€ 167
74×105	L74×105	1	350	SP529	€ 193	SP786	€ 233
75×50	L75×50	1	450	SP531	€ 166	SP788	€ 199
75×210	L75×210	1	125	SP530	€ 173	SP787	€ 207
78×7	L78×7	1	1500	SP838	€ 138	SP839	€ 166
78×100	L78×100	1	250	SP532	€ 171	SP789	€ 206

### 80-89 mm Width

Size in mm	SignMax Template	Pc./Row	Pc./Roll	Max Premium		Max Premium Plus	
				Item No.	Price/Roll	Item No.	Price/Roll
80×40	L80×40	1	500	SP533	€ 163	SP790	€ 196
85×54	L85×54	1	400	SP534	€ 177	SP791	€ 212

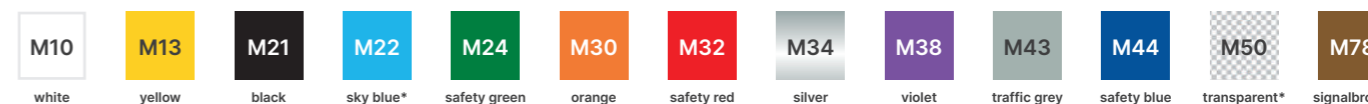
### From 90 mm Width

Size in mm	SignMax Template	Pc./Row	Pc./Roll	Max Premium		Max Premium Plus	
				Item No.	Price/Roll	Item No.	Price/Roll
90×30	L90×30	1	700	SP535	€ 174	SP792	€ 209
90×40	L90×40	1	500	SP553	€ 179	SP844	€ 215
90×60	L90×60	1	400	SP847	€ 164	SP848	€ 198
100×25	L100×25	1	750	SP536	€ 177	SP793	€ 215
100×30	L100×30	1	700	SP537	€ 188	SP794	€ 226
100×50	L100×50	1	450	SP538	€ 181	SP795	€ 217
100×60	L100×60	1	400	SP560	€ 182	SP807	€ 218
100×150	L100×150	1	175	SP539	€ 189	SP796	€ 225
100×200	L100×200	1	140	SP540	€ 188	SP797	€ 223
100×300	L100×300	1	80	SP541	€ 179	SP798	€ 216
105×148	L105×148	1	175	SP542	€ 194	SP799	€ 234
120×70	L120×70	1	200	SP546	€ 171	SP803	€ 206
175×11	L175×11	3	450	SP543	€ 118	SP800	€ 144
182×100	L182×100	1	140	SP562	€ 171	SP809	€ 204
200×18	L200×18	2	270	SP544	€ 124	SP801	€ 149

More colours available on request.

Choose the colour for your labels:

Please add the desired colour no. behind the item no. Example: SP524-M10 = 60×8 mm label rectangle Max Premium vinyl in white



\*M22 & M50 are not available in Max Premium Plus.

# LABELS HEXAGON



## Hexagon

Can it be eye-catching? Certainly with the hexagonal label shape.

Size in mm	SignMax Template	Pc./Row	Pc./Roll	Max Premium		Max Premium Plus	
				Item No.	Price/Roll	Item No.	Price/Roll
Ø30	LPE30	3	500	SP440	€ 69	SP590	€ 83
Ø30	LPE30	3	1000	SP441	€ 99	SP591	€ 123
Ø40	LPE40	1	400	SP442	€ 95	SP592	€ 115
Ø50	LPE50	1	300	SP443	€ 113	SP593	€ 134
Ø85	LPE85	1	275	SP444	€ 161	SP594	€ 195

# LABELS SQUARE



## Square

Quickly print out a QR code. The square label shape is versatile.

Size in mm	SignMax Template	Pc./Row	Pc./Roll	Max Premium		Max Premium Plus	
				Item No.	Price/Roll	Item No.	Price/Roll
13x13	L13x13	4	2000	SP555	€ 115	SP845	€ 139
15x15	L15x15	3	1500	SP450	€ 86	SP610	€ 105
20x20	L20x20	3	1000	SP451	€ 91	SP611	€ 108
26.5x26.5	L26.5x26.5	2	1000	SP452	€ 112	SP612	€ 136
30x30	L30x30	3	1000	SP459	€ 105	SP619	€ 125
33x33	L33x33	1	650	SP453	€ 111	SP613	€ 133
38x38	L38x38	1	600	SP454	€ 118	SP614	€ 144
45x45	L45x45	1	500	SP455	€ 128	SP615	€ 155
50x50	L50x50	1	450	SP456	€ 136	SP616	€ 163
80x80	L80x80	1	250	SP457	€ 162	SP617	€ 196
100x100	L100x100	1	250	SP458	€ 185	SP618	€ 223

Choose the colour for your labels:

Please add the desired colour no. behind the item no. Example: SP440-M10 = Ø30 mm label hexagon Max Premium vinyl in white



\*M22 & M50 are not available in Max Premium Plus.

# LABELS CIRCLE



## Circle

Ideal for marking e.g. inspection stickers, discount stamps and much more.

Size in mm	SignMax Template	Pc./Row	Pc./Roll	Max Premium		Max Premium Plus	
				Item No.	Price/Roll	Item No.	Price/Roll
Ø8	LPR8	2	500	SP410	€ 49	SP570	€ 61
Ø8	LPR8	2	1000	SP411	€ 67	SP571	€ 79
Ø10	LPR10	2	500	SP412	€ 52	SP572	€ 64
Ø10	LPR10	2	1000	SP413	€ 69	SP573	€ 85
Ø15	LPR15	2	500	SP414	€ 56	SP574	€ 67
Ø15	LPR15	2	1000	SP415	€ 78	SP575	€ 94
Ø16	LPR16	2	500	SP426	€ 57	SP586	€ 69
Ø16	LPR16	2	1000	SP427	€ 79	SP587	€ 95
Ø20	LPR20	2	500	SP416	€ 59	SP576	€ 94
Ø20	LPR20	2	1000	SP417	€ 83	SP577	€ 99
Ø25	LPR25	2	500	SP418	€ 61	SP578	€ 74
Ø25	LPR25	2	1000	SP419	€ 105	SP579	€ 125
Ø30	LPR30	3	500	SP420	€ 74	SP580	€ 89
Ø30	LPR30	3	1000	SP421	€ 108	SP581	€ 125
Ø40	LPR40	1	400	SP422	€ 112	SP582	€ 136
Ø50	LPR50	1	300	SP423	€ 107	SP583	€ 129
Ø60	LPR60	1	300	SP428	€ 144	SP588	€ 174
Ø75	LPR75	1	300	SP424	€ 162	SP584	€ 193
Ø100	LPR100	1	250	SP425	€ 184	SP585	€ 222

**SO EASY:  
MAKE YOUR OWN INSPECTION STICKERS WITH  
OUR CIRCLE LABELS!**

Choose the colour for your labels:

Please add the desired colour no. behind the item no. Example: SP410-M10 = Ø8 mm labels circle Max Premium vinyl in white



\*M22 & M50 are not available in Max Premium Plus.



## INDIVIDUAL LABELS

With our individual labels you have the possibility to produce all label sizes in one print. Almost every shape and size can be implemented. You say what you need - we take care of everything else!

Available colours:



Available materials:



Contact us:

Prices will be individually calculated for you.



**EVERY SIZE AND SHAPE.  
DIFFERENT SIZES IN ONE PRINT.  
FREE OF ADDITIONAL CHARGE.**

## HAZARD DIAMOND & BATTERY LABELLING

### Hazard Diamond

System for assessing the danger of dangerous goods

The hazardous diamond was developed as NFPA 704 („hazard diamond“) in the US. The danger diamond is equipped with four coloured fields and is read from left to right in a clockwise direction, with the blue field being the first one.

Blue section:  
Health

Red section:  
Flammability

Yellow section:  
Instability/reactivity

White section:  
Special notice



Size in mm	Pc./Roll	SignMax Template	Max Premium		Max Premium Plus	
			Item No.	Price/Roll	Item No.	Price/Roll
100x100	250	LNPPA704	106807	€ 249	110332	€ 287



### Battery Labelling

Since 01.01.2019, the new dangerous goods license plate for small lithium batteries according to ADR 2017 applies. Your packages must be marked as follows:

UN number 3480 = Lithium ion batteries (including lithium-ion polymer batteries) Class 9

UN number 3090 = Lithium metal batteries (including lithium alloy batteries) Class 9



Size in mm	Pc./Roll	SignMax Template	Item No.	Price/Roll
74x105	350	Lithium 74x105	110356	€ 226

# PROHIBITION & MANDATORY SIGNS



## Prohibition Signs

Prohibition signs are used to forbid certain actions or objects in order to prevent accidents and minimize risks.

With diagonal

Size in mm	Pc./Roll	SignMax Template	MAX Premium		MAX Premium Plus	
			Item No.	Price/Roll	Item No.	Price/Roll
Ø30	1000	LR30V	106705	€ 123	110304	€ 146
Ø50	300	LR50V	106706	€ 129	110305	€ 157
Ø75	300	LR75V	106707	€ 159	110306	€ 191
Ø100	250	LR100V	106708	€ 218	110307	€ 265

No diagonal

Size in mm	Pc./Roll	SignMax Template	MAX Premium		MAX Premium Plus	
			Item No.	Price/Roll	Item No.	Price/Roll
Ø30	1000	LR30RK	106709	€ 123	110308	€ 146
Ø50	300	LR50RK	106710	€ 129	110309	€ 157
Ø75	300	LR75RK	106711	€ 159	110310	€ 191
Ø100	250	LR100RK	106712	€ 218	110311	€ 265



## Mandatory Signs

Mandatory signs indicate work safety equipment and other precautionary measures. In this way they make a significant contribution to accident prevention.

Size in mm	Pc./Roll	SignMax Template	MAX Premium		MAX Premium Plus	
			Item No.	Price/Roll	Item No.	Price/Roll
Ø40	400	LPR40	106721	€ 112	110312	€ 123
Ø50	300	LPR50	106722	€ 107	110313	€ 135
Ø75	300	LPR75	106723	€ 159	110314	€ 195
Ø100	250	LPR100	106724	€ 184	110315	€ 222

# WARNING & INFORMATION SIGNS

## Warning Signs

Warning signs warn of injuries caused by hazardous substances or equipment, especially in the productive area.



No textfield

Size (SL*) in mm	Pc./Roll	SignMax Template	MAX Premium		MAX Premium Plus	
			Item No.	Price/Roll	Item No.	Price/Roll
25	1000	LW25	111246	€ 105	111253	€ 125
50	500	LW50	106729	€ 137	110316	€ 163
75	375	LW75	106730	€ 171	110317	€ 204
100	275	LW100	106731	€ 182	110318	€ 218

With textfield

Size (SL*) in mm	Pc./Roll	SignMax Template	MAX Premium		MAX Premium Plus	
			Item No.	Price/Roll	Item No.	Price/Roll
100	175	LWT100	106732	€ 179	110319	€ 214

## Information Signs

The rectangular signs with a red frame can point to many different types of information and ensure good visibility.



Size in mm	SignMax Template	Pc./Roll	MAX Premium		MAX Premium Plus	
			Item No.	Price/Roll	Item No.	Price/Roll
57×80	L57×80R	400	106737	€ 199	110320	€ 243
78×100	L78×100R	250	106738	€ 206	110321	€ 248
75×210	L75×210R	125	106741	€ 173	110322	€ 249
85×54	L85×54R	400	106745	€ 177	110323	€ 212
100×150	L100×150R	175	106739	€ 222	110324	€ 267
100×200	L100×200R	140	106740	€ 221	110325	€ 265
100×300	L100×300R	80	106742	€ 213	110326	€ 256

# GHS LABELS



## GHS Labels

Our square signs with pre-printed red frame are perfect for GHS Labels. Which are used for globally comprehensible hazard communication.

Size in mm	Pc./Roll	SignMax Template	Item No.	Price/Roll	Item No.	Price/Roll
20×20	1000	LGHS20	106787	€ 99	110327	€ 114
33×33	650	LGHS33	106789	€ 145	110328	€ 168
38×38	600	LGHS38	106790	€ 155	110329	€ 177
45×45	500	LGHS45	106791	€ 162	110330	€ 188
100×100	250	LGHS100	106793	€ 221	110331	€ 254



## GHS Labels

1-5 diamonds pre-printed

Hazardous substances must be classified and labelled in accordance with the GHS (Globally Harmonized System of Classification and Labeling of Chemicals).

Our pre-printed GHS Labels are easily supplemented with danger and safety instructions.

### GHS Label (1 Diamond)

Size in mm	Suitable for Content Amount	Pc./Roll	SignMax Template	Item No.	Price/Roll	Item No.	Price/Roll
57×80	250 ml - 3 l	400	LGHS1-1	106832	€ 199	110333	€ 232
74×105	3 l - 50 l	350	LGHS2-1	106837	€ 228	110338	€ 262
105×148	50 l - 500 l	175	LGHS3-1	106850	€ 232	110343	€ 265
100×200	no information	140	LGHS4-1	106855	€ 221	110348	€ 254

Note: Price list for GHS labels 2-5 diamonds pre-printed on the next page.

**SAFETY SIGNS  
- FAST AND EASY!**

### GHS Label (2 Diamonds)

Size in mm	Suitable for Content Amount	Pc./Roll	SignMax Template	Max Premium		Max Premium Plus	
				Item No.	Price/Roll	Item No.	Price/Roll
57×80	250 ml - 3 l	400	LGHS1-2	106833	€ 199	110334	€ 232
74×105	3 l - 50 l	350	LGHS2-2	106838	€ 228	110339	€ 262
105×148	50 l - 500 l	175	LGHS3-2	106851	€ 232	110344	€ 265
100×200	no information	140	LGHS4-2	106858	€ 221	110349	€ 254

### GHS Label (3 Diamonds)

Size in mm	Suitable for Content Amount	Pc./Roll	SignMax Template	Max Premium		Max Premium Plus	
				Item No.	Price/Roll	Item No.	Price/Roll
57×80	250 ml - 3 l	400	LGHS1-3	106834	€ 199	110335	€ 232
74×105	3 l - 50 l	350	LGHS2-3	106839	€ 228	110340	€ 262
105×148	50 l - 500 l	175	LGHS3-3	106852	€ 232	110345	€ 265
100×200	no information	140	LGHS4-3	106861	€ 221	110350	€ 254

### GHS Label (4 Diamonds)

Size in mm	Suitable for Content Amount	Pc./Roll	SignMax Template	Max Premium		Max Premium Plus	
				Item No.	Price/Roll	Item No.	Price/Roll
57×80	250 ml - 3 l	400	LGHS1-4	106835	€ 199	110336	€ 232
74×105	3 l - 50 l	350	LGHS2-4	106841	€ 228	110341	€ 262
105×148	50 l - 500 l	175	LGHS3-4	106853	€ 232	110346	€ 265
100×200	no information	140	LGHS4-4	106863	€ 221	110351	€ 254

### GHS Label (5 Diamonds)

Size in mm	Suitable for Content Amount	Pc./Roll	SignMax Template	Max Premium		Max Premium Plus	
				Item No.	Price/Roll	Item No.	Price/Roll
57×80	250 ml - 3 l	400	LGHS1-5	106836	€ 199	110337	€ 232
74×105	3 l - 50 l	350	LGHS2-5	106843	€ 228	110342	€ 262
105×148	50 l - 500 l	175	LGHS3-5	106854	€ 232	110347	€ 265
100×200	no information	140	LGHS4-5	106866	€ 221	110352	€ 254

**RESISTANT FOR INDOOR  
AND OUTDOOR USE!**



Topseller!

## CABLE AND TUBE MARKERS

Cable marker made of self-adhesive, transparent foil for printing or self-inscribing in different colours. Self-laminating, easy to handle and high adhesion. The transparent area protects the text and offers a high resistance to abrasion, dirt and solvents. Ideal solution for labeling wires and cables.

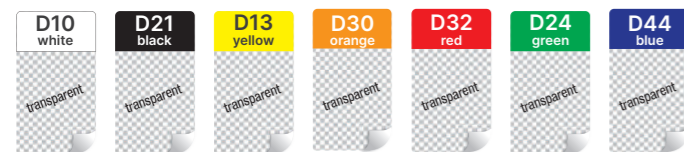


Space for your desired text

As additional protection, the label is wrapped with the self-adhesive transparent protective laminate.

Choose the colour for your labels:

Please add the desired colour no. behind the item no. Example: SP701-D10 = 45x20 cable/tube marker in white



Max. Cable Ø in mm	Label Size in mm	Text Field Size in mm	SignMax Template	Pc./Roll	Item No.	Price/Roll
11	45x20	10x20	LKM10	750	SP701	€ 139
12	50x25	10x25	LKM11	750	SP702	€ 169
13	60x20	20x20	LKM18	900	SP709	€ 177
14	60x30	14x30	LKM12	750	SP703	€ 182
18	75x50	18x50	LKM13	450	SP704	€ 199
19	80x40	18x40	LKM14	500	SP705	€ 194
24	90x30	20x30	LKM15	700	SP706	€ 210
25	100x50	20x50	LKM16	450	SP707	€ 234
87	50x300	25x50	LKM17	80	SP708	€ 162
10	90x30	Ø 28 (for inspection sticker)	LKPP10	700	SP550	€ 210



Topseller!

## PIPE MARKERS

With our pipe markers, facilities can be professionally marked without much effort. The Max Premium films have a strong adhesive force and extremely high quality, so they are guaranteed to last and be highly visible.

Proper repair, effective firefighting and maximum occupational safety: all this is guaranteed with our pipe markers.

Size in mm	SignMax Template	Pc./Roll	1-Coloured		2-Coloured		2-Coloured			
			MAX Premium		MAX Premium Plus		MAX Premium		MAX Premium Plus	
			Item No.	Price/Roll	Item No.	Price/Roll	Item No.	Price/Roll	Item No.	Price/Roll
10x60	LRM10	500	SP754	€ 126	SP756	€ 153	SP755	€ 164	SP757	€ 195
21x155	LRM30	175	SP731	€ 128	SP720	€ 155	SP732	€ 166	SP721	€ 199
21x300	LRM33	90	SP736	€ 129	SP722	€ 157	SP737	€ 166	SP723	€ 197
44x320	LRM50	90	SP741	€ 132	SP724	€ 159	SP742	€ 169	SP725	€ 209
44x400	LRM52	70	SP746	€ 136	SP726	€ 162	SP747	€ 172	SP727	€ 212
74.5x540	LRM75	50	SP751	€ 171	SP728	€ 205	SP752	€ 206	SP729	€ 248

Choose the colour for your labels:

Please add the desired colour no. behind the item no. Example: SP731-M44 = 21x155 mm pipe marker in safety blue



Most common pipe marking colour standards:

Substance	Colour	Text colour	Standard
Acids and Alkalis	M38, violet	white	European standard
Air	M22, sky blue	white	European standard
Fire Fighting	M32, safety red	white	European standard
Flammable/ Non flammable liquids/oils	M78, signal brown	white	European standard
Gas	M30, orange	black	European standard
Steam	M43, grey	black	European standard
Water	M24, safety green	white	European standard
Other	M44, safety blue	white	Defined by user
Other	M21, black	white	Defined by user
Other	M10, white	black	Defined by user
Other	M13, yellow	black	Defined by user



# LOCKOUT TAGOUT LABELS

Just use our LOTO labels - with these you automatically mark according to MSL 1.1 Standard. The labels are compatible with the entire LabelMax Series (including the LabelMax SP3, LabelMax One LabelMax VS1 and the TagRec Station).



**LOTO Identification Label**  
Contains all the important information about Machine/System/Area: Shutdown, Main Responsibility, Employees, E-points, non unlockable energies.



**LOTO Energy Point Label**  
Identification of the energy points



**Lock Labels**  
Easy allocation of your locks for a smooth workflow.



**LOTO Energy Point Label**  
Marking non unlockable energy points.



**LOTO Foil Tape Marking**  
Beginning/end of non-releasable energies.

**Key Labels**  
Easy assignment of your keys. Made of tear resistant polyester film.

## EASY IN JUST 3 STEPS: LOTO WITH THE MSL 1.1 STANDARD

# LOTO LOCKOUT / TAGOUT



LOTO Identification Label

Size in mm	Pc./Roll	SignMax Template	Max Premium		Max Premium Plus	
			Item No.	Price/Roll	Item No.	Price/Roll
100x150	175	MSL100x150	110508	€ 212	113092	€ 248
50x75	450	MSL50x75	110509	€ 192	113093	€ 224

Lock Label

Size in mm	Pc./Roll	SignMax Template	Max Premium		Max Premium Plus	
			Item No.	Price/Roll	Item No.	Price/Roll
30x25*	750	MSL30x25	109941	€ 93	113098	€ 112

\*Other sizes available on request.

Key Label

Colour	Pc./Roll	Size in mm**	SignMax Template	Polyester Film	
				Item No.	Price/Roll
white	P10	35x10	MSL35x10	110514	€ 119
yellow	P13	35x10	MSL35x10	110734	€ 119
black	P21	35x10	MSL35x10	110735	€ 119
safety green	P24	35x10	MSL35x10	110736	€ 119
orange	P30	35x10	MSL35x10	110737	€ 119
safety red	P32	35x10	MSL35x10	110738	€ 119
silver	P34	35x10	MSL35x10	110739	€ 119
violet	P38	35x10	MSL35x10	110740	€ 119
traffic grey	P43	35x10	MSL35x10	110741	€ 119
safety blue	P44	35x10	MSL35x10	110742	€ 119
transparent	P50	35x10	MSL35x10	110743	€ 119

\*\*two parts

LOTO Energy Point Label

Size in mm	Pc./Roll	SignMax Template	Max Premium		Max Premium Plus	
			Item No.	Price/Roll	Item No.	Price/Roll
100x100	250	MSL100x100	110510	€ 211	113904	€ 246
50x50	450	MSL50x50	110511	€ 181	113095	€ 192

LOTO Energy Point Label

Size in mm	Pc./Roll	SignMax Template	Max Premium		Max Premium Plus	
			Item No.	Price/Roll	Item No.	Price/Roll
Ø100	250	MSL100	110512	€ 209	113096	€ 245
Ø50	300	MSL50	110513	€ 125	113097	€ 147

LOTO Foil Tape Marking

Description	Colour	Size	Item No.	Price/Pc.
Film cartridge	red/white striped	30 mm x 30 m	113122	€ 115






# SignMax v10



## SIMPLE SIGNDESIGN QUICKLY & WITHOUT PRIOR KNOWLEDGE - WITH THE ASSISTANT „WIZARD“!

The SignMax v10 is a very powerful and easy to use sign software. The program combines creativity with ease of use. The thought-out user interface with its intelligent features, such as the design assistant "Wizard", offers valuable tools for developing signs and labels quickly and cost-effectively in just a few steps without any prior knowledge.

The SignMax v10 forms the basis for every company, laboratory and office to equip it with individual markings. Employees who do not have previous knowledge of safety labeling can now learn the necessary skills and handles in a short time and simply implement them themselves.

The SignMax software is also available as a server version!  
**Just talk to us. We will be happy to advise you.**

- **Large Pictogram and ClipArt Library**  
With many sign templates and safety markings.
- **Design assistant "Wizard"**  
For simple sign design without previous knowledge.
- **Free Pictogram and ClipArt Updates**  
New pictograms always according to the latest standards and requirements.
- **Free Live Support**  
If you have any questions, please do not hesitate to contact us.
- **Free SignMax Workshops**  
All over Germany, online or on site. Spend an informative day with us in a relaxed atmosphere.

# THE EASY SIGN SOFTWARE

SIMPLE SIGN DESIGN FAST & WITHOUT PRIOR KNOWLEDGE

## USER TRAINING\*

Technical instruction directly with you on site  
Get to know the many features of SignMax and the easy handling of your labeling system. We will be happy to train you and your team on site at your company.

## OVERVIEW OF SIGNMAX V10 VERSIONS

### SignMax v10 - Basic

Software for LabelMax SP3, VS1, XL+, TagRec Station

With the Basic version, you get all the functions you would expect from a professional sign software. Creating texts and various shapes is child's play and subsequent editing of the objects is possible at any time. In addition, you can choose from numerous templates and always receive up-to-date pictograms from us.

Basic € 649 / Item No. 106690  
Basic Pro € 899 / Item No. 106944

### SignMax v10 - Print & Cut

Software for MultiMax V8

With the Print & Cut version, you can use all the capabilities of the print functionality – print and cut in just one step. Design your signs and markings easily and quickly and add a cutting contour – the MultiMax takes care of everything else.

Print & Cut € 959 / Item No. 106691  
Print & Cut Pro € 1,390 / Item No. 106692

### SignMax v10 - Ultimate

Software for all systems

Our SignMax v10 Ultimate is a software for almost all systems! It includes drivers for LFP from Mimaki, HP, Epson, Roland, Graphtec and Saga. With this software you have the possibility to control your entire printing machinery. The perfect "all-in-one" complete solution for creating signs, labels, markings, graphics and much more.

Ultimate € 3,590 / Item No. 106945

**FREE WORKSHOPS  
ON SITE THROUGHOUT GERMANY  
OR ONLINE!**



### Basic and Print & Cut

Program features:

- Automatic program updates
- 32 or 64 bit mode
- Windows 10 Support
- Direct X support
- Pantone colour palette
- Open multiple times
- Extensive import and export functions

Image editing features:

- All standard functions of a sign software (e. g. help lines)
- Wizard (Simple sign creation with our sign assistant!)
- Large pictogram and clipart library (including many sign templates)
- Simple text editor
- New spell checker
- Bidirectional font preview for Arabic and Hebrew
- Unicode support
- Extensive serialization functions
- Simplified page management
- Barcode module (incl. 30+ barcodes)

At Print&Cut:

- Printer & Plotter Drivers incl. Printmanager

### Basic Pro and Print & Cut Pro

All functions of the Basic version

plus:

- Enhanced image editing functions (Melting, cutting, node point editing, aligning text to objects, image noise reduction and much more.)
- Special Effect Tools (More cutting tools, soft shadow effects, antique graphic effects and much more.)
- Online access to numerous cliparts
- Professional fonts with additional font options
- More text control options
- Ginsu knife for decorative patterns
- Ruler and scale tools
- Optionally specify text height in point (Pt)
- Outside / inside contour filling
- Rotary set with rotation
- Working on various levels as a template
- Bezier mode
- Material-saving function

At Print&Cut Pro:

- Printer & Plotter Drivers incl. Printmanager

### Ultimate

All functions of the Print & Cut Pro version plus:

- GIMP 2. 9 Image Processing
- Expert text editor for price lists etc.
- Vectorization
- Drivers for LFP and plotter (including Mimaki, HP, Epson, Roland, Graphtec, Saga)

### Requirements

- Processor: Dual Core processor 2.0GHz or higher recommended
- Memory: 2 GB or more
- Hard Drive: min. 20 GB free space
- Graphics resolution: from 1366 × 768 pixels 32 bit | 1 free USB port
- Operating system: from Windows 7 (Service Pack 1) and .NET Framework 3.5 and 4.6



Subject to change. All prices plus VAT.

## LABELING SYSTEMS SIGNS & LABELS LOCKOUT TAGOUT

LabelSystems| by R.M Diffusion  
Vicolo Gabrio Serbelloni, 1/A,  
20064 Gorgonzola (MI)  
Italia

Tel: +39 02 36647086  
Mob: +39 349 4370274  
Info: [info@labelsystems.it](mailto:info@labelsystems.it)  
Sales: [sales@labelsystems.it](mailto:sales@labelsystems.it)

